



STENTEN'S INSTRUCTIONS



INSTALLATION INSTRUCTIONS

MST1RXV3

Enclosure

EZGO RXV – Ultra Seal & Bag Cover



Parts:

(1) Track style enclosure	(1) Passenger side aluminum rail	(9) Taplite screws
(1) Driver side aluminum rail	(1) Rear aluminum rail	

Enclosure Installation:

1. Remove tubes from enclosure and zip onto front canopy struts. (Picture 1)
2. Place side rail so that back corner is flush with rear canopy strut pocket and front is aligned with tube. Channel should be towards outside and notch towards front. Mark and drill outside holes using $\frac{5}{32}$ " bit. Attach using 2 screws. Drill center hole and install screw. (Picture 2) Repeat for other side.
3. Install rear rail by aligning ends of rail with edge of rear canopy strut pocket. Mark and drill outside holes using $\frac{5}{32}$ " bit. Attach with 2 screws. Mark and drill center hole and install screw. (Picture 3)
4. Install rear and side enclosure panels by sliding them into the aluminum awning rails. (Picture 4)
5. Install rear closeout panel by attaching to side panels with hook and loop (plastic bead should align with the bead on the side panels). Tuck bead under seat. Attach closeout panel to seat back using the adhesive backed hook and loop strip. (Picture 5)

Parts needed for Bag Cover Installation (If Included):

(1) Club Protector Bag Cover	(1) Aluminum rail	(3) Taplite screws
------------------------------	-------------------	--------------------

Bag Cover Installation:

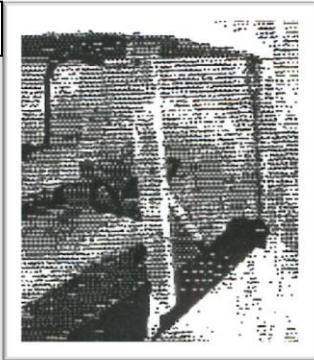
1. Remove rear most nuts and bolts from bag hoop assembly. Retain hardware.
2. Attach bottom bag cover bar using hardware removed in step #1. (Picture 6)
3. Center the awning rail between the rear canopy struts. Use rail as a guide to mark and drill $\frac{5}{32}$ " holes. Attach rail using 3 screws. (Picture 7)
4. Slide bag cover into rail. (Picture 8)
5. Attach cover to bottom bar using pins as shown in Picture 9.



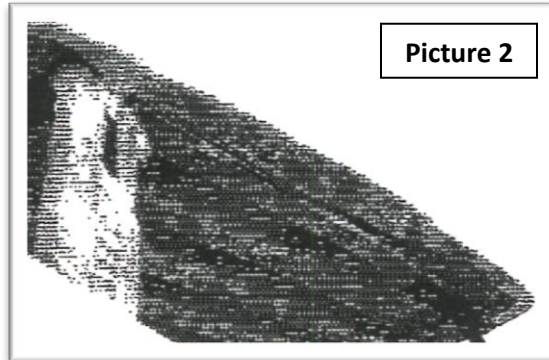
STENTEN'S INSTRUCTIONS

Reference Pictures

Picture 1



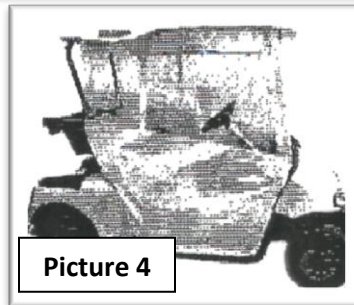
Picture 2



Picture 3

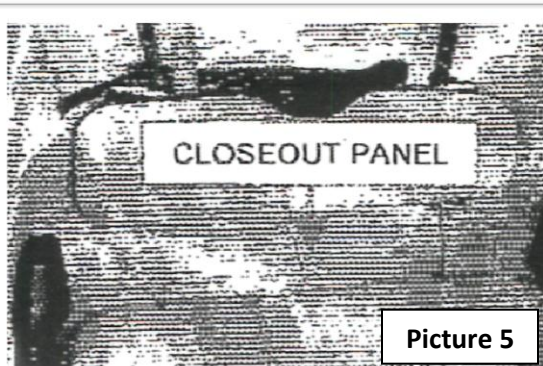


Picture 4

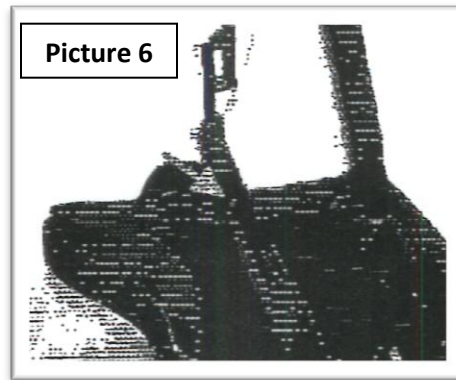


CLOSEOUT PANEL

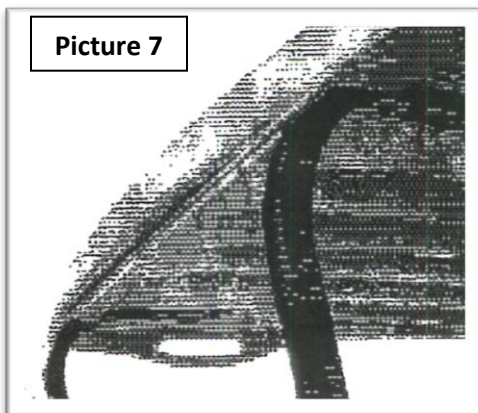
Picture 5



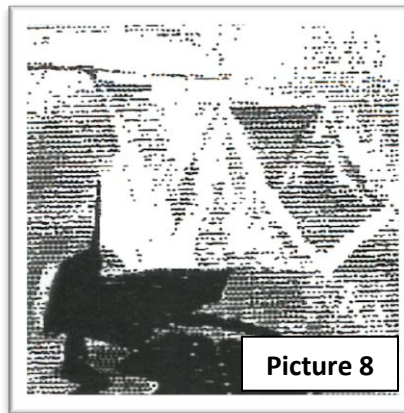
Picture 6



Picture 7



Picture 8



Picture 9

