



# STENTEN'S INSTRUCTIONS



## INSTALLATION INSTRUCTIONS

WH204EB

Wire Harness

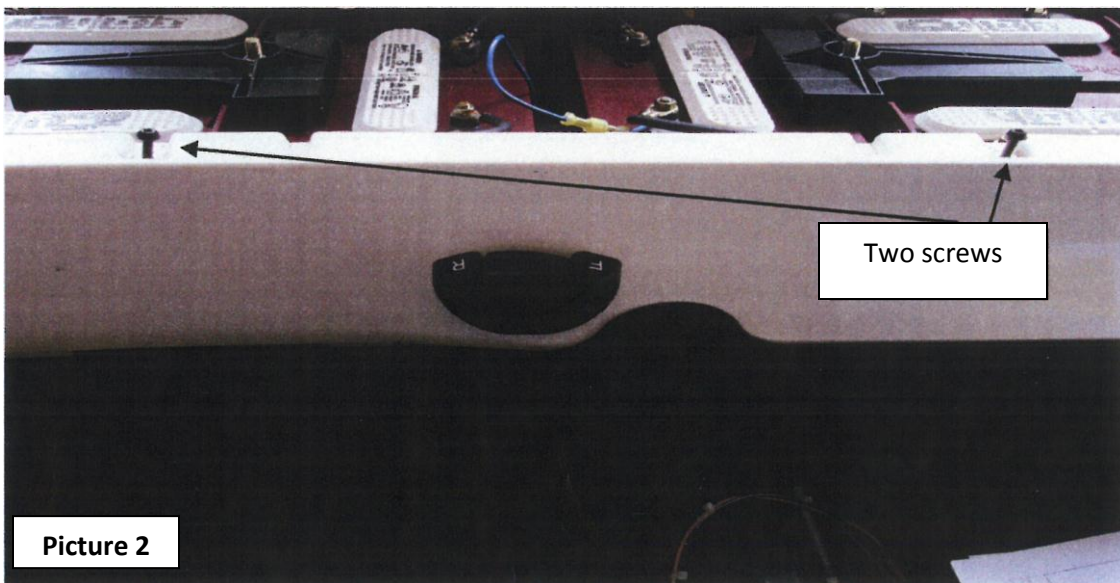
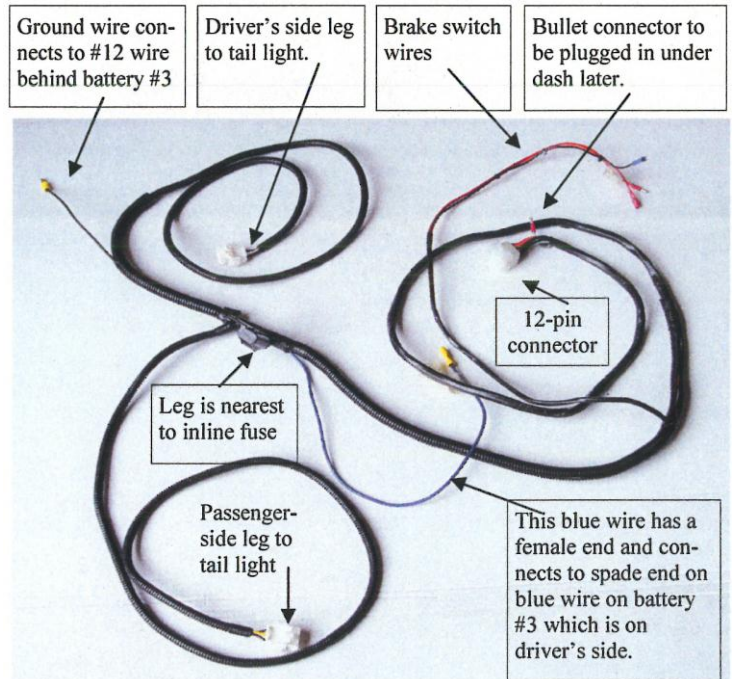
Precedent Electric '08 & Newer



\*Precedents with 8-volt batteries require a voltage limiter and another small harness and instructions are available.

Follow these simple instructions to install the kit:

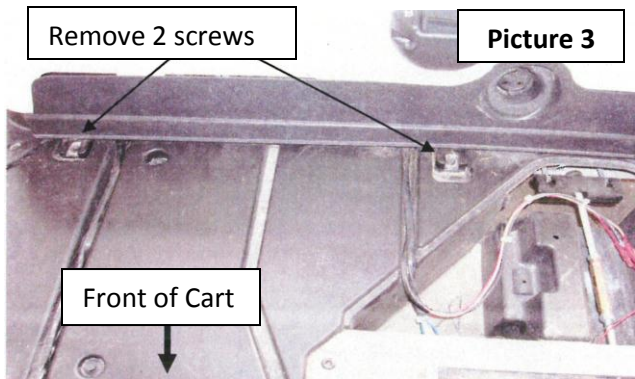
1. Turn the key switch OFF.
2. Turn the TOW switch to TOW.
3. Remove the ground wire from the negative post on #4 battery on the driver's side. (See Illustration # 8 on page 3 for battery numbering.)
4. Remove seat cushion.
5. Locate the floor mat retainer that holds the floor mat in place. Remove the two screws on the driver's side and two screws on the passenger side and lift out the mat.
6. Locate and remove the brake adjustment access panel.
7. Under the seat and in front of the battery compartment, remove two screws that hold the rear body to the battery compartment. (See picture 2.)



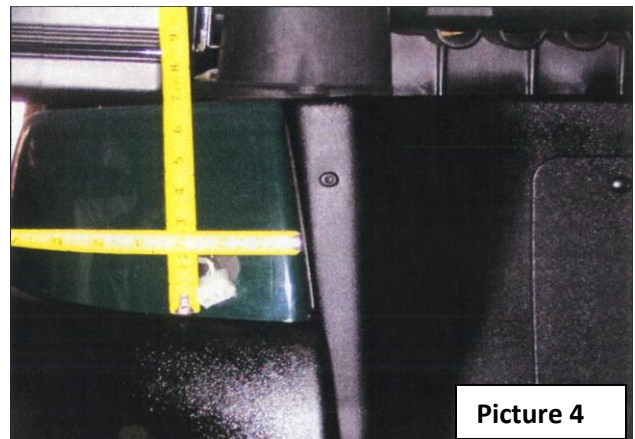


# STENTEN'S INSTRUCTIONS

8. Locate the trim piece around the receptacle that the battery charger plugs into. It has three retaining screws. Remove the center screw and the screw on the passenger side. (Picture 3)



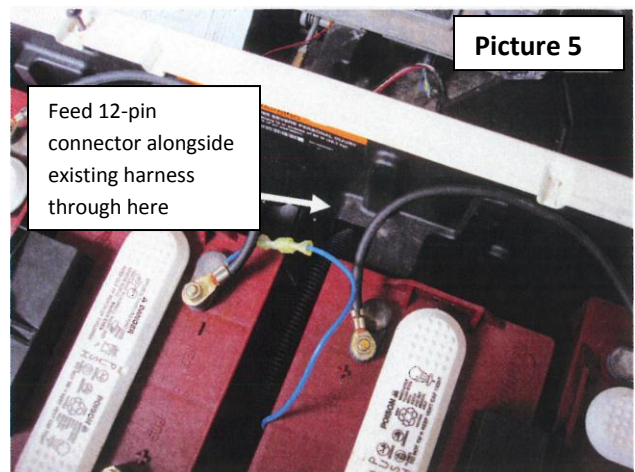
9. Next move the rear of the cart and prepare to position the taillights. (See Picture 4) From the top edge of the bumper, measure up 1 ½ inches and draw a horizontal line. From the edge of the bag well, measure horizontally 2 ¼ inches and draw a vertical line. At the intersection of the two lines, mark with a center punch. Use a 1 ½ inch hole saw to drill the hole.



## NOTE:

**Batteries shown in picture 5 are 8-volt batteries, and have a different configuration than a 12-volt system.**

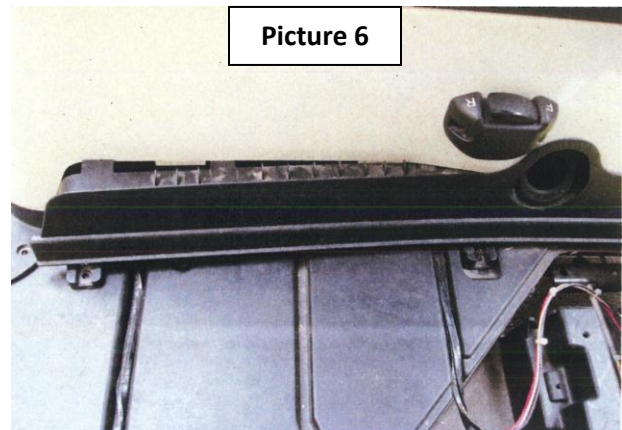
10. Locate the 12-pin connector on the harness and drop it into the battery compartment. Thread the 12-pin connector from inside the battery compartment through the hole shown in Picture 5. Feed connector and harness down and toward the front of the cart (See step 11 for further explanation.)





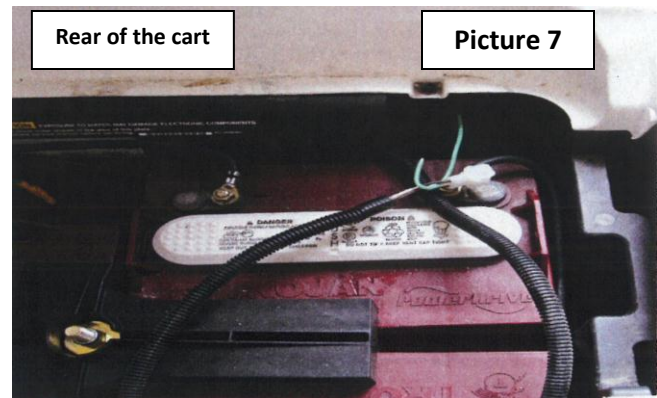
# STENTEN'S INSTRUCTIONS

11. Do this by lifting the body and pulling the charger trim piece forward which will give you the room to work the connector under the body. (Picture 6) Follow the path of the main harness that is already on the cart, and pull the three wires for the brake switch forward until they are aligned with the slot in the floor that leads to the brake compartment.



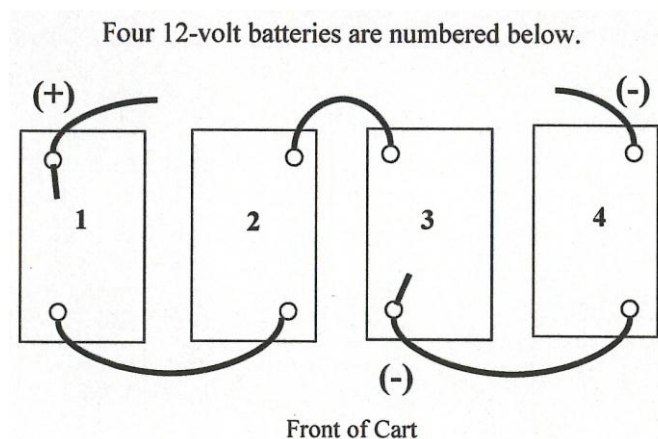
12. Locate the panel around the on-off switch. (Not pictured) Remove the three screws and the panel. Follow the path of the main harness and feed the new harness forward until the 12-pin connector is under the dash. Connect the male bullet end to the harness on the cart.

13. Next, route the tail light wires through the holes in the upper corners of the battery box on the passenger and driver side. The passenger side leg is the one that has the yellow wire in the 3-plug connector. These wires may be pulled through by using the wire snake (not supplied) with a hook bent into the end. (See picture 7) Feed the snake through the tail light holes you previously drilled and use the hook to grab the tail light wires and pull the wires through the hole.



14. Locate battery #3 that is on the driver's side of the cart. (Illustration 8) On the cart behind battery #3 is a black #12 wire with a bullet connector. Find the bullet connector on the light harness and connect the two.

15. The blue wire on the harness connects to the #12 wire with male connector on #3 battery. This will output 12-volts to the lights. **DO NOT** connect to the blue wire on battery 1 as this would be 48-volts.

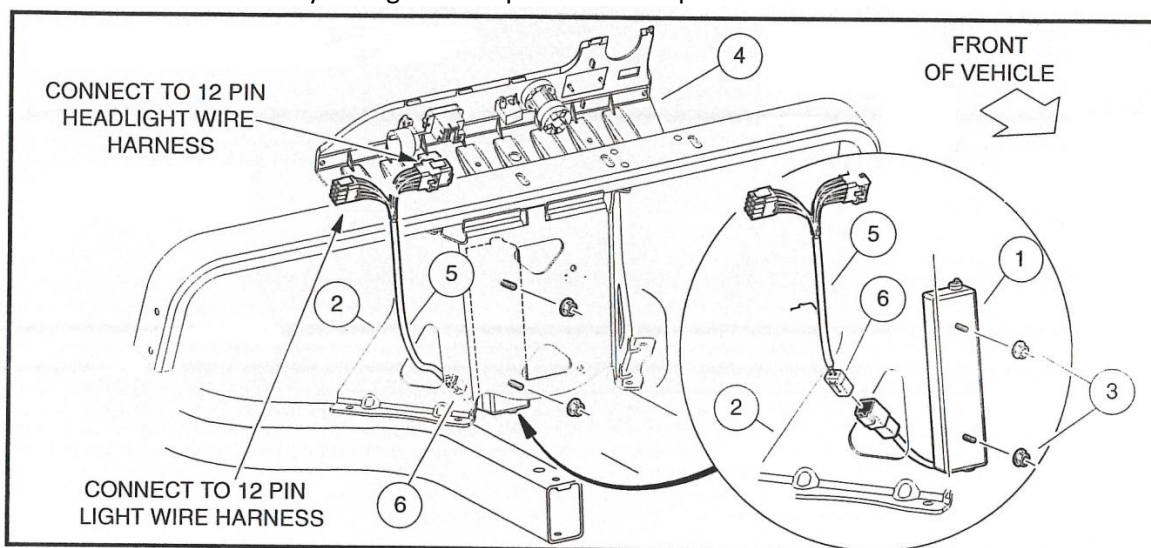




# STENTEN'S INSTRUCTIONS

**Now that the battery bucket harness is installed. Use the instructions in the light kit to install the lights.**

1. Replace ground wire on #4 battery.
2. Turn TOW switch to RUN position.
3. Turn key switch to ON position. (Brake lights will not work if the key switch is not in the ON position and TOW switch is not in the RUN position.)
4. Test lights.
5. Replace body trim, brake access cover, floor mat, dash access cover etc.
6. Install pedal group/brake light components
  - a. See Standard Light Kit Installation Instructions
7. Install Dash Components
  - a. See Standard Light Kit Installation Instructions
8. Secure Horn Button
  - a. See Standard Light Kit Installation Instructions
9. Secure Voltage Limiter
  - a. This step is only for 8-volt battery configurations.
  - b. For 12-volt battery configurations proceed to step 10.



**Figure 7 Secure Voltage Limiter**

- c. Jack the front of the vehicle with a floor jack, and secure with two jack stands underneath the vehicle's frame.
- d. From underneath the front passenger-side wheel-well of the vehicle, secure the voltage limiter (1) to the inside of the dash board support (2) with two ¼-20 hex locknuts (3) as shown (**Figure 7**). Tighten the hardware to 65 in-lb (7.3 N m) See following NOTE.  
**NOTE:** The wire harness from the voltage limiter should face towards the rear of the vehicle, and point downward behind the passenger side access hole in the dash board support (2).
- e. From behind the instrument panel:
  - i. Route the voltage limiter wire harness (5) down through the passenger side hole in the dash board support (**Figure 7**).
  - ii. From underneath the front passenger-side of the vehicle, connect the two-pin connector (6) from the voltage limiter wire harness (5) to the voltage limiter.
- f. Raise the vehicle with a floor jack, remove the jack stands, and lower the vehicle to the ground.