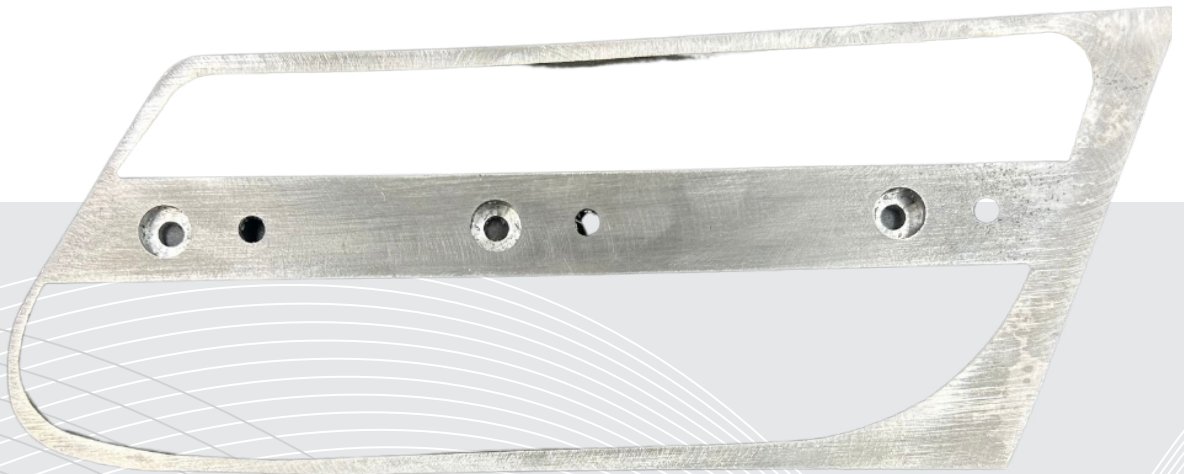




Stenten's Golf Cart Accessories

TEMPO ROUTING KIT

User Manual



English

INTRODUCTION

Thank you for purchasing our Router Template Kit. This kit will make installing our Tempo light kits easier and give your customer an OEM Factory headlight look. Please read through these instructions completely before attempting to cut in your lights. Alignment of the template on the front cowls body line is essential and should be done carefully. Failure to align the template correctly will result in the hole being askewed and cause the bezel to not fit correctly around the light. Please find the installation video on our YouTube channel: <https://youtu.be/LfRo9wWffFo> or by scanning this QR Code:



WARNING

If your front cowl is already custom painted be sure to protect it by using masking tape to tape off where the template will attach to the body to avoid scratching.

ITEM CHECK LIST

There are three components that make up this routing template kit. The Aluminum routing guide, 3 self tapping screws, and a flush trim router bit.



Aluminum Template

This aluminum template for cutting both Driver & Passenger sides.



#10 x 3/4" Screw

Stainless Steel Self drilling screws that will need a 5/16 bit.



Trim Router Bit

3/8" Flush Trim router bit with bearing on a 1/4" shaft.

QUICK START GUIDE



1. Before You Begin

Make sure you have all the recommended tools before you begin. You will need: A Drill with drill bit, flush trim router, cutting tool, masking tape, 5/16 hex bit, and the routing kit.



2. Remove the cowl

Remove and clean the cowl.



3. Apply Masking Tape

Tape off where the template will sit on the body to protect the paint.



4. Find Body Line

Locate the body line to allow for proper template placement.



5. Align Template

Starting on the top outside corner align the template with the cowl body line.

QUICK START GUIDE



1. Secure the Template

Using the supplied self drilling screw attach the template using the outside recessed hole.



2. Secure the Template

Check the template alignment on the body line and attach the inside screw provided.



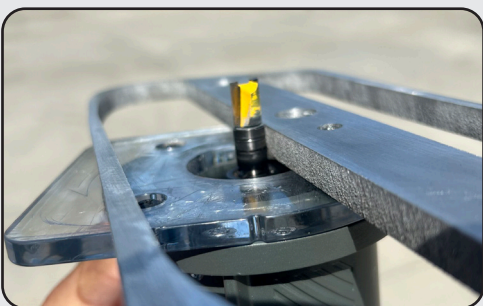
3. Secure the Template

Finally attach the center screw.



4. Drill two access holes

Drill two holes to allow the 3/8" router bit to enter.



5. Routing

Align the Router bit so that the collar will ride on the template and not cut into the template.

QUICK START GUIDE



1. Routing

Place the router bit in the access hole before turning on the router. Run the router bearing along the template in a clockwise direction to avoid the bit running on you.



2. Remove Template

With both top and bottom routed out remove the template.



3. Cut Tabs

Cut the two tabs using a multitool or your preferred method.



4. Test Fit

Using the Light kits supplied bezel test the fit of the cut and make any adjustments needed.



5. Repeat Steps & Reinstall

Flip the template to cut the other side and then reinstall the front cowl.



Stenten

2785 Commerce Pkwy, North Port FL 34289

Tel.: (800)541-8333 • Fax: (941)426-4240

Sales@Stenten.com • www.Stenten.com